



Screen door Brace Bar

The Security Boss® Brace Bar is recommended for use with our line of premium Pet screen doors. The Brace bar will add support and rigidity to sliding screen doors and securely support our larger sized pet screen doors. The Brace Bar kit comes complete with the brace bar, 2 brace bar retainer clips and 2 screw on retainer clips to fasten the brace bar to the pet door.

The normal position for the Brace Bar is along the top stationary frame of the pet door. This will secure the 4th corner of the pet door and will support the pet door for use by large exuberant dogs.

Installation

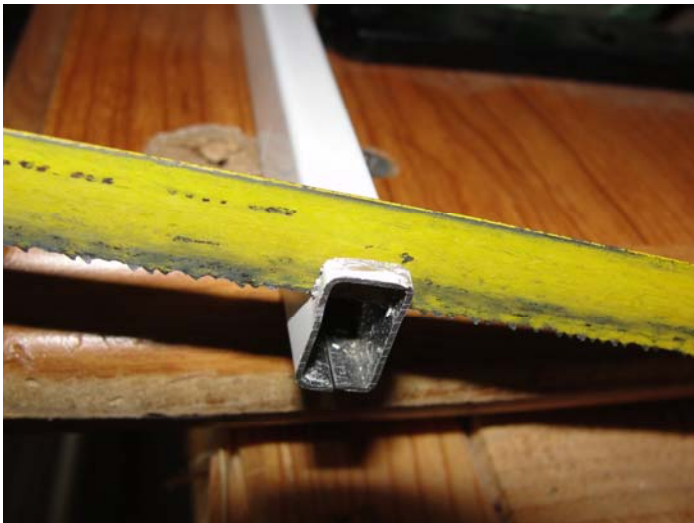
Install the Security Boss® Screen Door as directed. The Brace Bar can be installed at the time of Pet Door Install or it can be added to doors already installed.



Measure the distance between the vertical frames of the patio screen door the pet door is installed into. Measure from the side that does not have the screen spline cord visible. This distance will be the length you will cut the Brace Bar to. Mark this distance on the Brace Bar.



Cut the Brace bar with a hack saw. It is best to wrap the section of the Brace Bar you are cutting with clear tape to guard against accidentally scratching the paint with the hack saw.

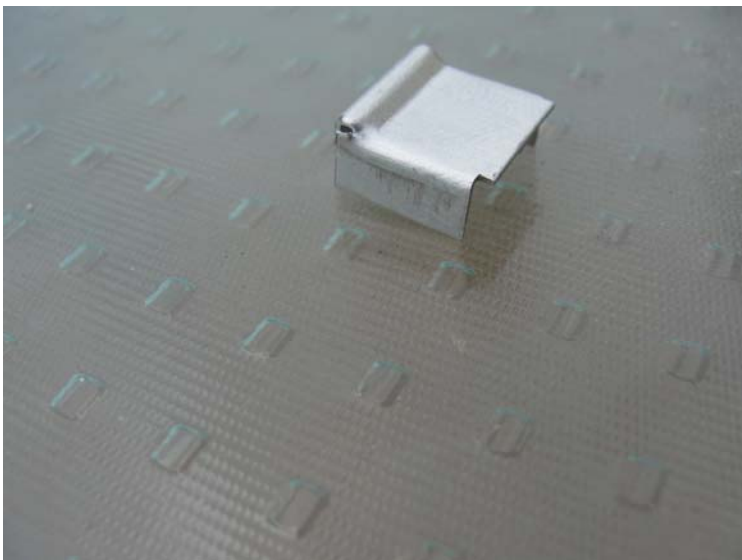


Test the fit of the brace bar between the patio screen frame rails. Re-cut if needed.

Along the patio screen frame that is adjacent to the pet screen door, pry a small section (3/4"-1") of screen spline from the raceway of the patio screen frame. Do this at the point the top edge of the Pet Screen door meets the patio screen frame. Repeat this step on opposite side of patio screen frame. Remove as little as possible.

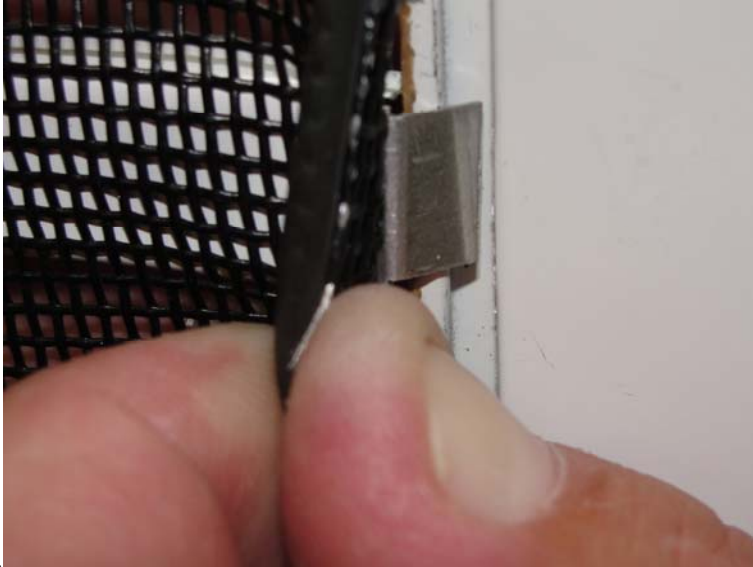


Insert the brace bar retainer clips into the brace bar. Leave enough of the retainer clip out of the brace bar so it can clip onto the patio door screen frame raceway.



The brace bar is normally installed on the same side of the screen fabric as the pet screen door resides. Position the brace bar horizontally above the pet door.

Insert one end of the brace bar with clip between the screen fabric and patio screen frame that has the screen spline loosened. You may need to flex the curved part of the Brace bar clip over the raceway.. Repeat on opposite side



Push the screen spline back into the patio door raceway to secure the brace bar clips. Be sure to keep the Screen fabric snug as you are rolling the spline into the raceway



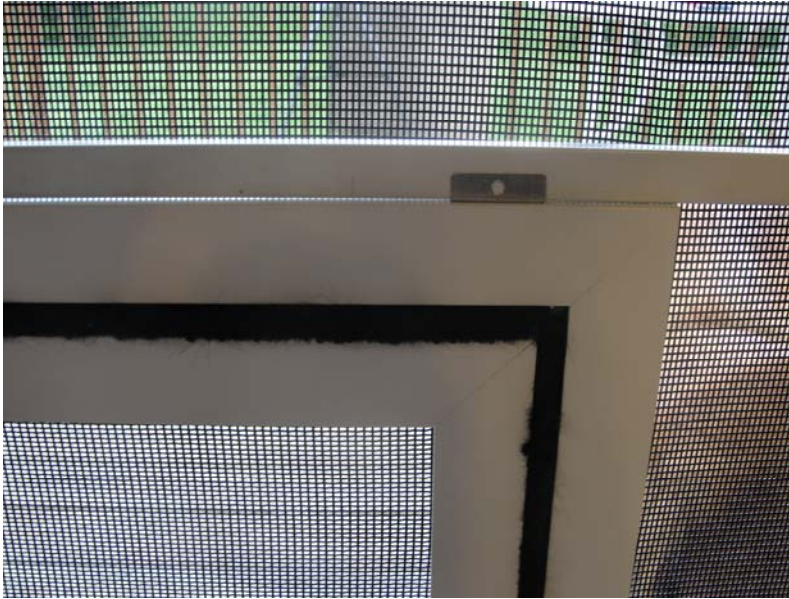
Remove the screen spline that is securing the top of the Pet screen door (if previously installed).



Clip two metal retainers over the pet screen door raceway. One retainer must be positioned as close to the unsupported pet screen door corner as possible. The other can be spaced along the raceway.



Once the metal retainers are positioned on the raceway, slide the brace bar down to within 1/16" of touching the pet screen door. The brace bar should be resting along the top edge of the pet door screen frame and between the screen fabric and tab of the metal retainer that has a hole.



Push the screen spline back into the raceway on the Pet screen door; be sure to keep the screen fabric snug as you are rolling the spline in to the raceway.



Using the drill bit and two screws provided pre drill holes into the brace bar through the holes in the metal retainer clip. Secure the retainer clip with the screw. Repeat on each retainer.



Your brace bar is now installed.

